

FREEDOM FLEX ENVIRONMENTS



MODULAR CLEAN ROOMS FOR HIGH TECH MANUFACTURING

Freedom Flex Environments

Freedom Flex Environments integrates the cleanest, most efficient and innovative systems for indoor environments.

Freedom Flex Environments has brought together industry leaders to provide a single source solution for increasing demands and complexities of modular clean rooms:

The ICT Group of Companies is a specialized construction management company with expertise in moveable wall systems, clean rooms, and isolation rooms.

CONTACT:

Headquarters-
3830 Commerce Drive,
Saint Charles, IL 60174
Phone: (877) 277-9100
Website: www.ictgroupcos.com
Email: tjlutz@ictconst.com

ESD Global is an engineering firm emphasizing innovation, adaptability and sustainability of the built environment; provided by their advanced mechanical, electrical, plumbing, fire protection, life safety, and technology engineering services.

CONTACT:

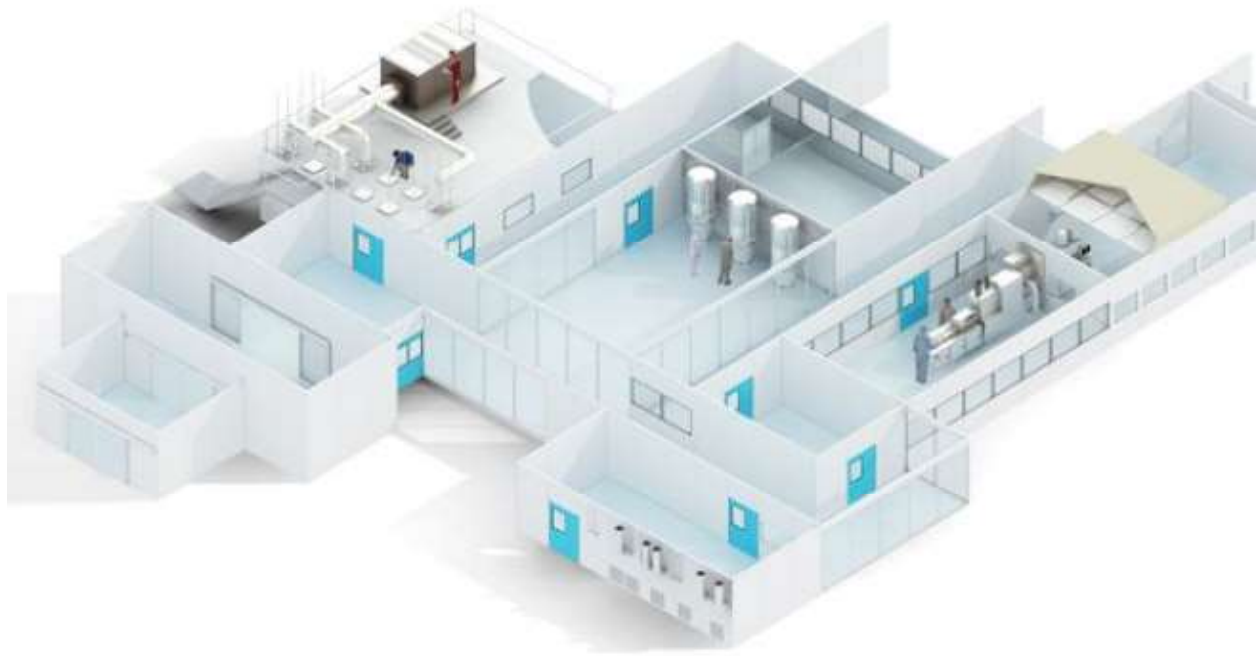
Headquarters-
233 South Wacker Drive, Suite 5300
Chicago, IL 60606
Phone: (312) 372-1200
Website: www.esdglobal.com
Email: ekos@esdglobal.com

Lo Destro Construction Company is a general construction company that provides an unparalleled construction experience, particularly with MEP infrastructure projects, which consistently delivers beyond expectations through reliability, integrity, and teamwork.

CONTACT:

Headquarters-
211 East Ontario Street, Suite 500
Chicago, IL 60611
Phone: (312) 521-5599
Website: www.lodestroconstruction.com
Email: blodestro@lodestroconstruction.com

The Freedom Force Project Process



- Coordinate project team progress meetings
- RFI, RFP and change order tracking
- Ensure tracability throughout project life cycle
- Job closeout docs, as built, assist in commisssioning & qualification

- Initial client engagement
- Identify project goals
- Assemble project team
- Product specification & procurement



- Site & infrastructure analysis
- General construction process
- Site supervision & schedule compliance
- Construction QA & safety installation qualification



- Collaborate with client engineering
- Master planning & systems assessment
- Infrastructure & process integration
- Automation technology interface
- Project design, plans & specification docs
- Project commissioning



Vision - The ICT Group of Companies was founded with a focus on developing innovative approaches to constructing mission critical, high tech manufacturing environments.

- We have furthered our goals by partnering with large, global construction product manufacturers becoming their channel into the marketplace.
- Utilizing innovative and cutting-edge product technologies in our project designs has brought our clients highly efficient, cost reducing systems that add to their facilities profitability year over year.
- We continue to strive through our R&D development initiatives to create new technologies that will delineate a new globally responsible approach to products and systems.

Construction Services - ICT, our construction services company, provides design build, interior construction services.

- This includes both standard fixed construction as well as flexible, modular construction methods.
- Our core competency of clean construction protocols was developed during decades of working in occupied mission critical manufacturing facilities including electronics, aerospace, and defense.
- Services include master planning, project design, site analysis and testing, budget and schedule consulting, project management, on site safety, quality assurance, job close out, warranty compliance, and maintenance training.

Product Distribution - IFS, our distribution and product procurement company, provides the products we design into our projects for installation into our clients' facilities.

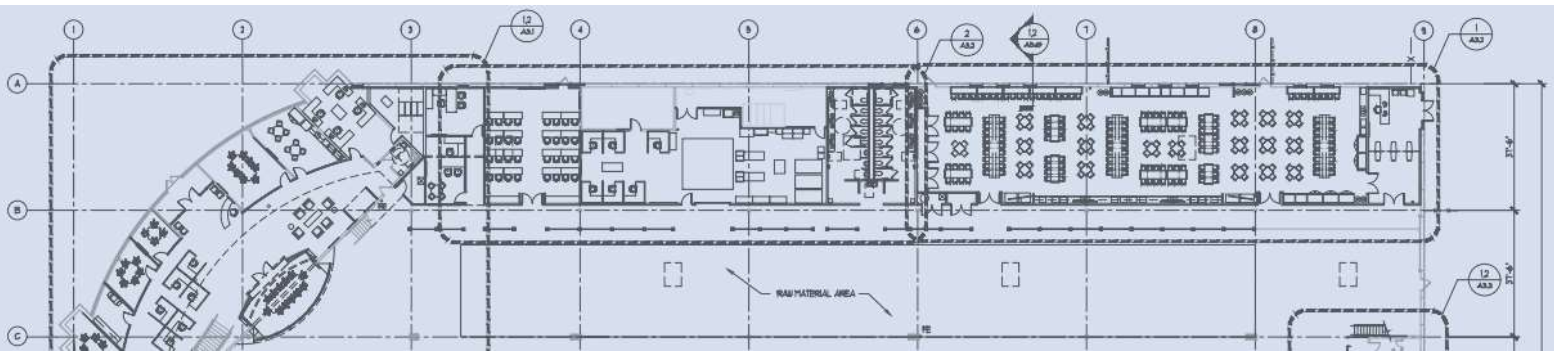
- Purchasing at a distributor level reduces the cost of the most effective and innovative products available for our clients' facility needs.

intelli-force magnetix™ - This is our brand of cutting-edge product technologies. intelli-force R&D, our new product development arm, invents groundbreaking construction product technologies.

- Magnetically adhered materials for flooring, including static control
- Magneyzed panel wall systems.



- **Founded in 1996**
- **Projects throughout North America & the Carribean**
- **Over 3 million square feet**





A global company, ESD is a leader in improving society through the built environment. We create solutions that produce economic, environmental and experiential benefits for our clients, many of whom are the biggest names in the worlds of business, technology — and beyond. We embrace technological change and are in the forefront of developing Intelligent Buildings. We emphasize innovation, adaptability and sustainability when providing mechanical, electrical, plumbing, fire protection, life safety and technology engineering.

Engineering

MEP/FP • Life Safety • Master Planning Central Plants • Refrigeration Systems • Fuel Cell Systems

Automation

Master Planning • Assessment • Vendor Agnostic Design • System Redesign • Compliance

Technology

Intelligent Buildings • Connected Workplace • Audio Visual • Physical Security • Structured Cabling • Technology Migration Planning and Project Management • Wired and Wireless Network • Network Audits and Hardware Assessments • Technology Commissioning (Audio Visual, Security) • Healthcare Technology

Energy+Eco

Energy Efficiency • Building Analytics • Sustainability and Green Building Consulting • Health and Wellness • Energy+Eco Commissioning

Commissioning

Mission Critical Facilities • Short Circuit Coordination Study Verification • High Performance Buildings • Functional Performance Test and Integrated Systems Test Administration • Field Services • Health Sciences • LEED

Workplace Solutions



High Performance Buildings



Mission Critical Facilities



Innovation Since 1967

Firm Size 280

Repeat Business 80% +

2020 Charitable Initiatives 38

Diversity MBE



Who We Are

Lo Destro Construction Company was founded on the core values of reliability, integrity, and collaboration. We are committed to being a leader by providing lean, sustainable construction solutions through the use of cutting edge technology.

Trust forms the basis of every good partnership and we gain this trust through exceptional performance by every member of the construction team. Our company is comprised of individuals who honor respect, responsibility, and trust.

Safety is a part of our company fabric; it is who we are. We firmly believe that safety is an integral part of the construction process, on an equal basis with production and quality.

Services

Preconstruction

At Lo Destro, we involve the entire project team in the early stages of planning and design, ensuring that our clients receive the most cost-effective solutions.

Construction

On any construction project, there can be a variety of moving parts. Budget and schedule details, evolving design, changing building models, and even owner stakeholders may all be shifting as the process unfolds. This is where a construction company with hands-on building experience, technical know-how, strong trade partner relationships and a knack for looking at things a little differently all come into play. Our depth of oversight through the entire process sets us apart from other construction firms.

Safety Program

Ongoing safety training is a key part across all facets of our operation, providing our employees with the skills and safety measures required in today's most complex building environments.

Technology

Our goal is always to provide up-to-the-minute project information that's easy for the entire team to access, wherever and whenever it's needed. That is why we have implemented the most sophisticated technology solutions to work on every project, starting in the design phase, through project close-out.

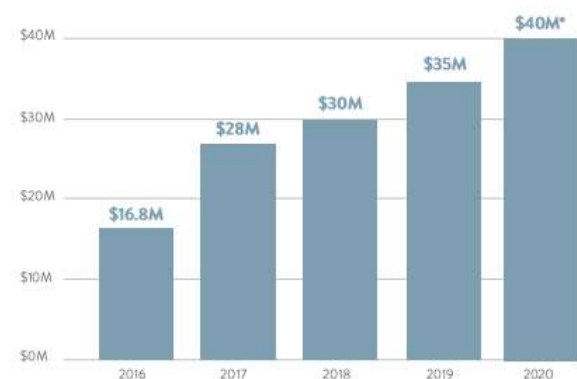
Experience

Our vast experience and expertise in MEP's has allowed us to specialize in highly complex hospital, medical and higher education construction. We are also currently managing the construction of (31) new medical sterile processing facilities across the US with an average build cost of \$4MM. Lo Destro prides ourselves on our MEP proficiencies, including the ability to pre-fabricate MEP components and deliver them onsite expediting the construction schedule and ensuring consistent quality craftsmanship.



Year Revenues

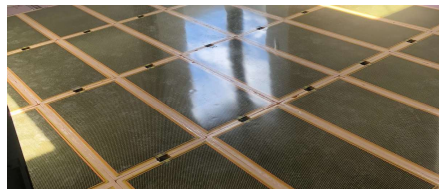
*projected



Our Trusted Affiliate Partners



RPT Panel Technologies designs and manufactures cutting edge nanotechnology heating systems that are easily installed and integrated into existing environments and new construction.

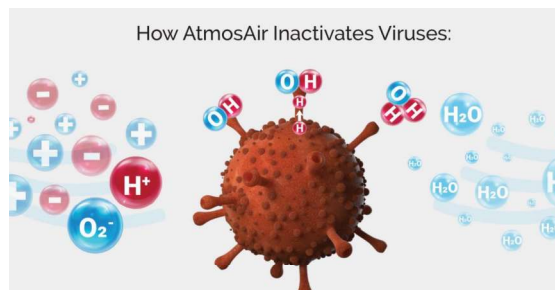
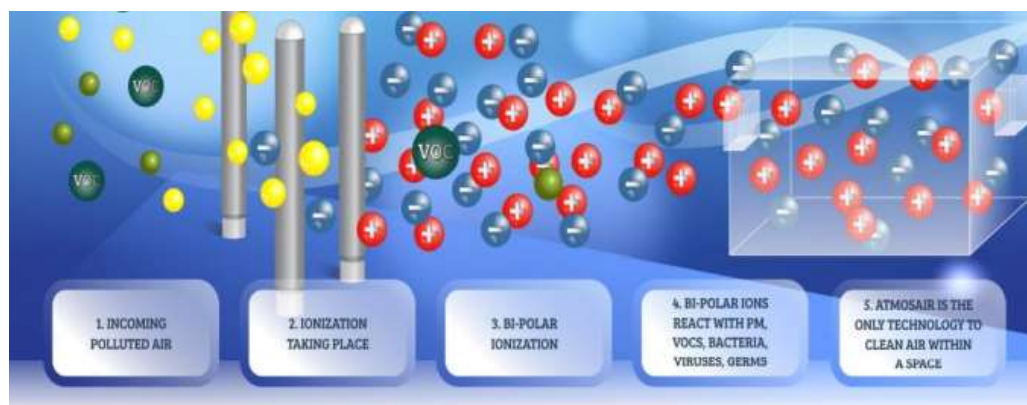


RPT Heat Systems Attributes

- Affixed insulation backer/underlayment
- Sound Control built in. Achieve up to 68 IIC, 72 STC
- Easily Repaired, Cleaned and Decontaminated without damaging the system
- Energy Efficient
- Silent and maintenance free
- Reduces the flow of germs and other contaminants
- Anti-microbial & hypoallergenic; naturally mold resistant
- Physiological benefits



AtmosAir is a patented Bi-Polar Ionization Air Purification System. It is the most effective system for cleaning and decontaminating indoor air and surfaces.



1) Positive (+) and negative (-) ions are introduced into the air via the AtmosAir system. OH radicals are formed when ions attach to the proteins that protrude from the membrane of a virus.

2) The OH radicals steal hydrogen from the virus, and return to the air as water, leaving holes in the membrane.

3) The destroyed proteins leave holes in the membrane, inactivating the virus.



**Local Union 25
Northern N.J.**



Thousands of trained union workers available for quality installations in partnership with trusted signatory contractors.





astellas



- NORTHWESTERN MEDICINE HOSPITALS
- ADVOCATE HEALTHCARE
- UIC CHICAGO HOSPITALS
- PARKVIEW HOSPITAL
- UNIVERSITY OF MI. HOSPITAL
- DETROIT CHILDRENS HOSPITAL
- MILWAUKEE CHILDRENS HOSPITAL
- AURORA HOSPITALS
- FROEDERT CANCER HOSPITAL
- LURIE MEDICAL CENTER
- SIMPSON QUERRY RESEARCH CENTER
- MAYO CLINIC
- ASTELLAS PHARMA
- SPACE X
- SPACE SYSTEMS LORAL
- BALL AEROSPACE
- UTC COLLINS AEROSPACE
- LOCKHEED MARTIN
- BOEING
- NASA
- SIERRA NEVADA CORP.
- NORTHRUP GRUMMAN
- BAE SYSTEMS
- STRYKER MEDICAL
- HILLROM
- GE MEDICAL
- APPLE
- MOTOROLA
- BOSTON SCIENTIFIC
- JABIL CIRCUIT
- CELESTICA
- SIGMATRON INTERNATIONAL
- CREATION TECHNOLOGIES
- AETNA INSURANCE
- BSWIFT
- NEWMARK, KNIGHT, GRUBB & FRANK
- GRUBB & ELLIS MANAGEMENT
- FORD / VISTEON
- GENERAL MOTORS
- FIAT CHRYSLER
- 3M
- NEXTEER AUTOMOTIVE
- CSL PLASMA LOCATIONS
- FRESenius MEDICAL LOCATIONS
- TOYOTA DESIGN LABS
- GENTEX
- WALGREENS
- VESTED MEDICAL
- PEPPER CONST
- POWER CONST
- TURNER CONST
- MORTENSON CONST
- SKENDER CONST
- WHITING TURNER
- ARCO MURRAY
- BOLDT CONST

Boston Scientific
Advancing science for life™

